

2010 Camaro SS 20109 Strut Brace Installation Instructions



Thank you for your purchase of this Hotchkis Performance product. Your Strut Brace set was designed with the performance and durability you've come to expect from Hotchkis Performance.

Note: Please read the entire installation instructions before starting. Having the right tools will ensure a smooth install process.

Supercharger Note:

If you have the Magnuson supercharger (Magna Charger) installed on your vehicle, you will need to relocate the intercooler reservoir tank using the included Hotchkis bracket.



The hotchkis bracket resembles the Magnuson bracket, but it positions the reservoir down and towards the rear to gain clearance for the brace. Reuse the bracket hardware from the Magnacharger kit. Undo the 3 bolts holding the reservoir to the bracket. Remove the single nut that holds the bracket to the engine. Replace Magnuson bracket with Hotchkis bracket. Reuse the nut to secure the bracket to the engine. Reuse 2 of the 3 bolts that hold the reservoir to the bracket. Proceed to the strut brace installation.

STRUT BRACE INSTALLATION

1. The first step for this installation is to remove the front struts to gain more room to drill our strut brace mounting holes. There are 4 holes total that will be drilled.

Jack the front of the car up and place the car on jack stands. Remove the front wheels.

2. Unbolt the brake line tab from the strut.



***BRAKE LINE
BRACKET***

3. Remove the ABS line from the bracket.



ABS BRACKET

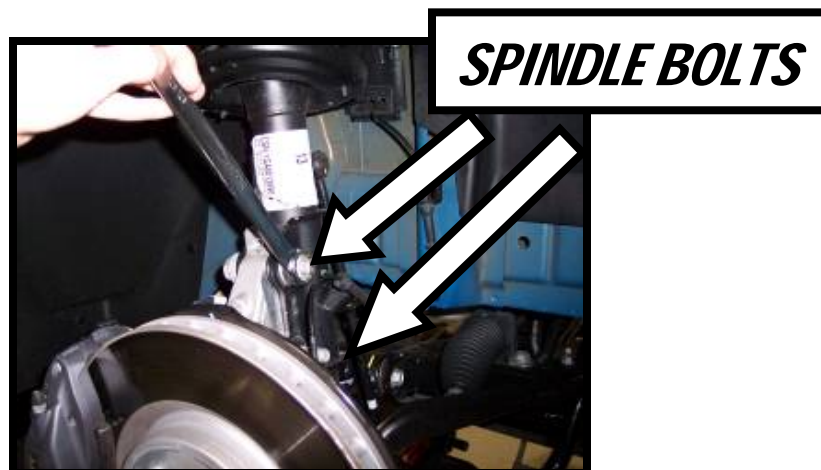
4. Unbolt the sway bar link from the strut.



5. Loosen the nut on top of the strut underneath the hood.
NOTE: Do not completely remove the nut. Loosen until it can be later removed by hand. This will make it easiest to remove the strut.



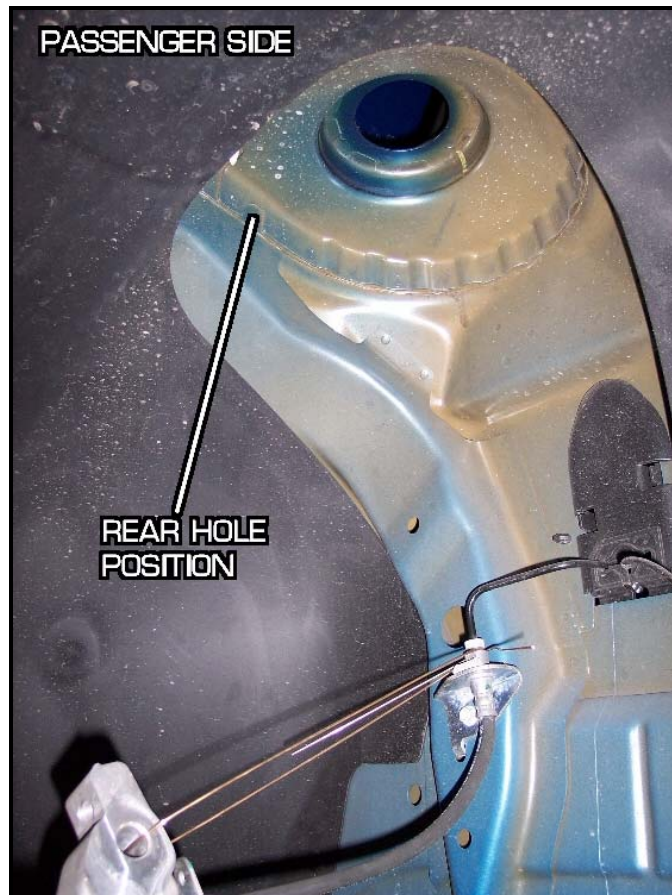
6. Mark the strut where the upright nuts are located with a marker. Remove the bolts that hold the spindle to the strut.



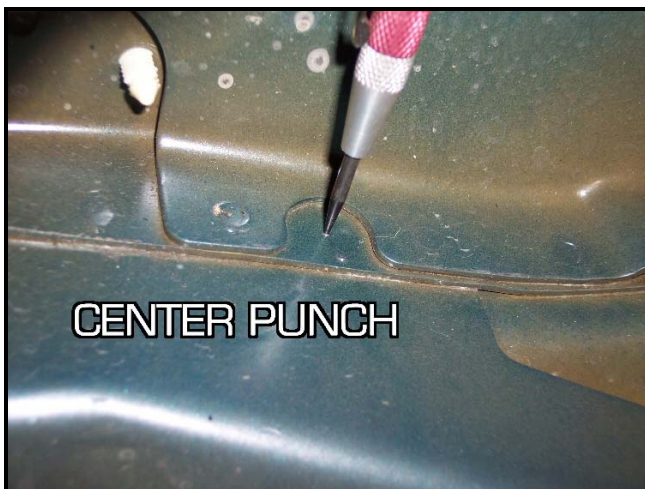
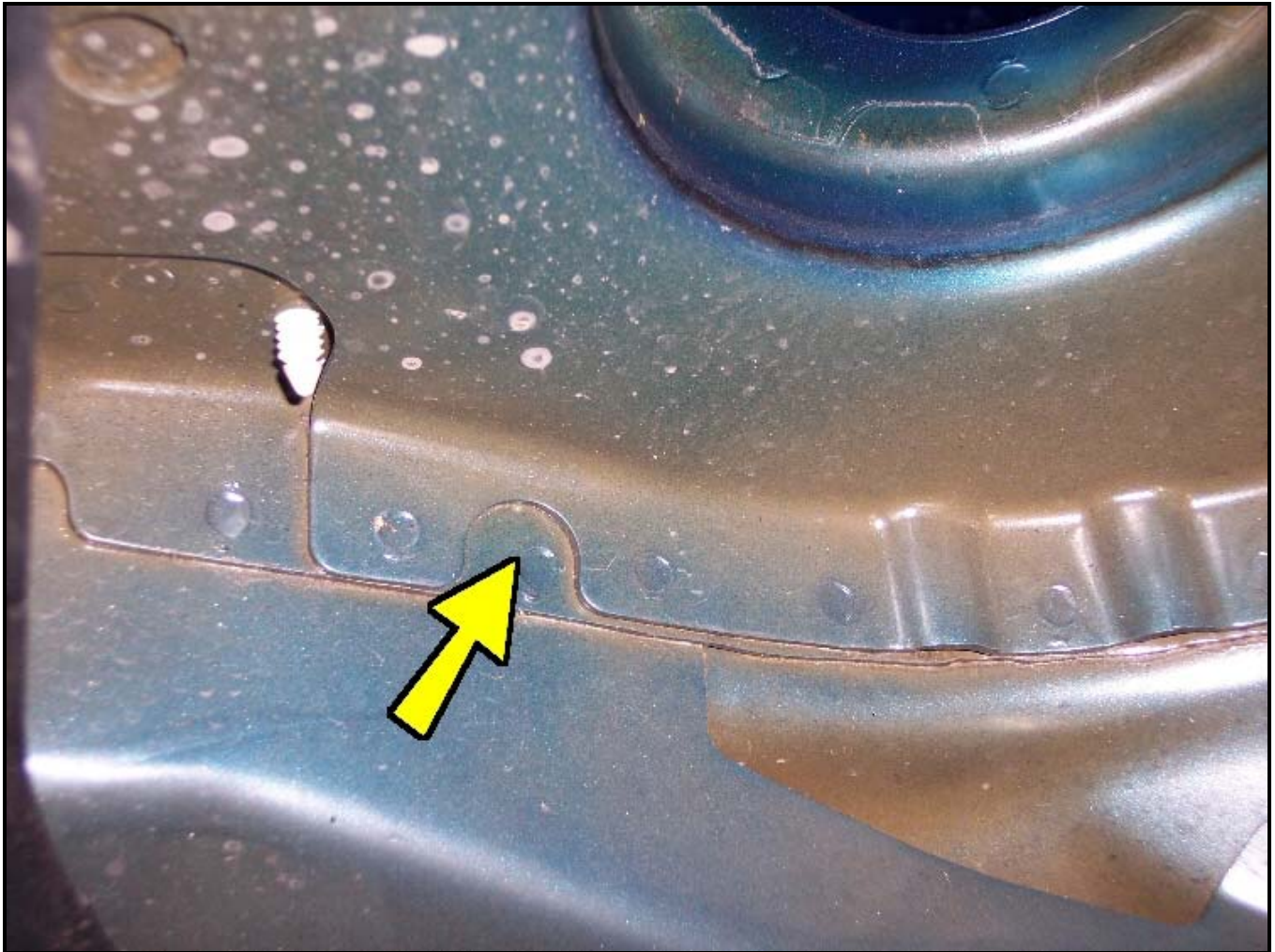
7. Now while supporting the strut with one hand, remove the nut on top and lower the strut. Use a bungee cord or wire to hold the upright close to the chassis. This will ensure the suspension does not hang too low putting tension on the brake hose.

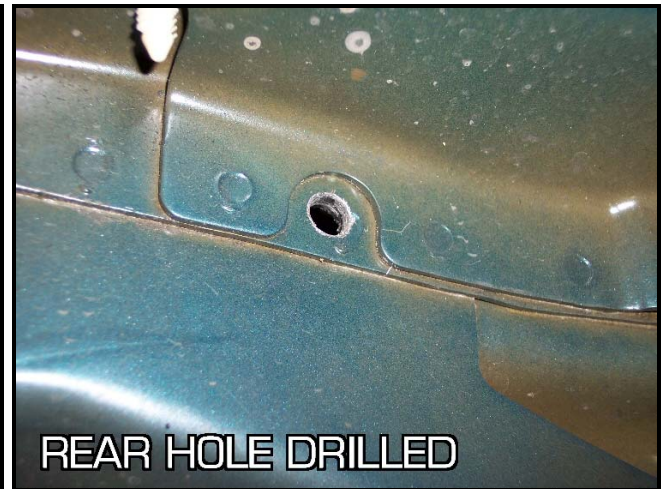
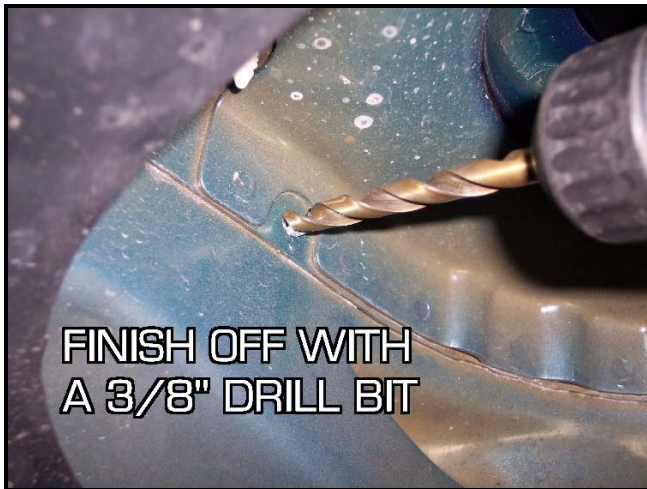


8. Peek underneath the strut tower apron. The first holes you will be drilling are the rear holes located in the pictures below.

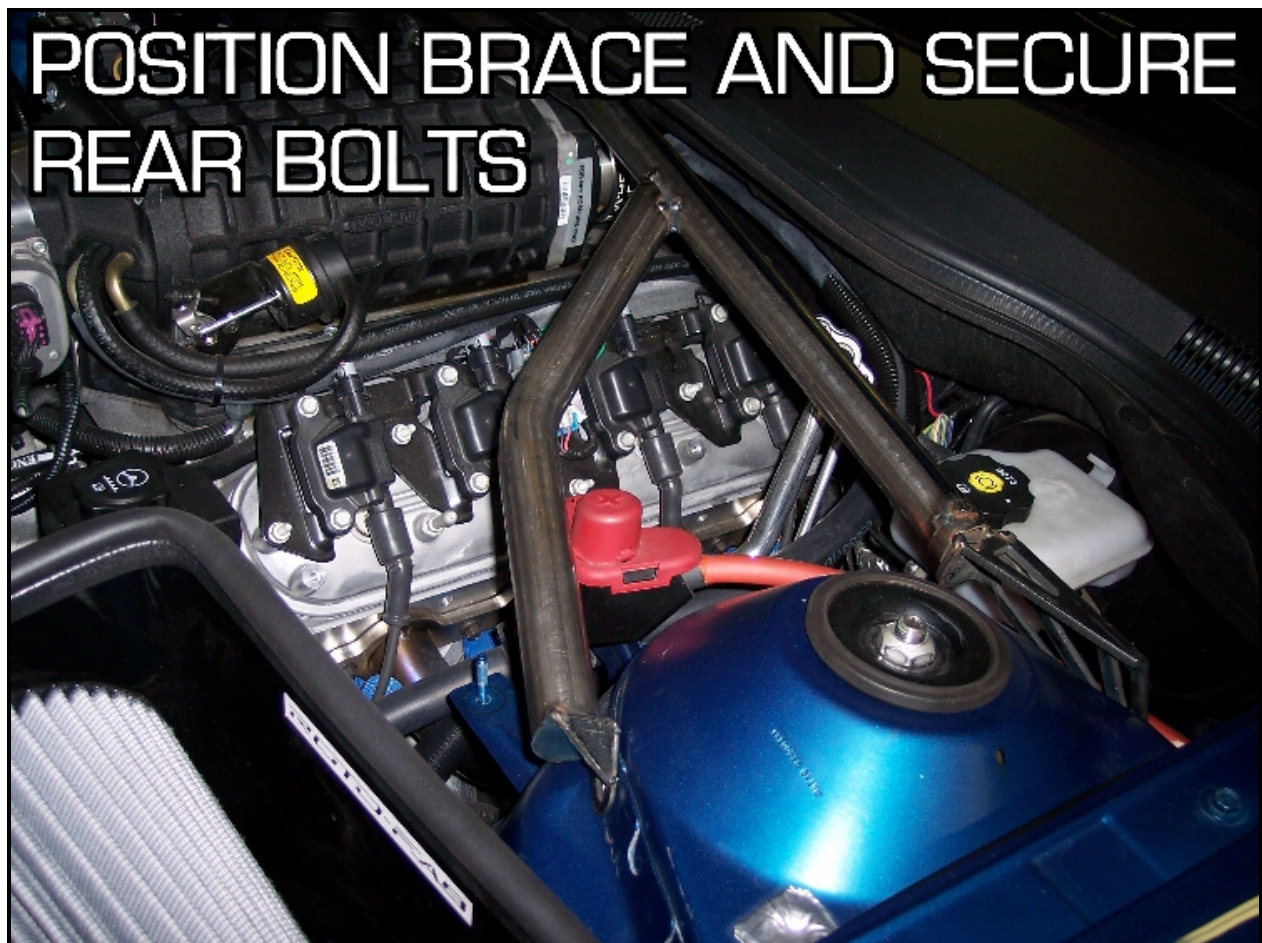


- Center punch the center of the semicircle shaped seam. Drill a pilot hole with a 1/16" or 1/8" drill bit. Then drill the hole out with a 3/8" drill bit.

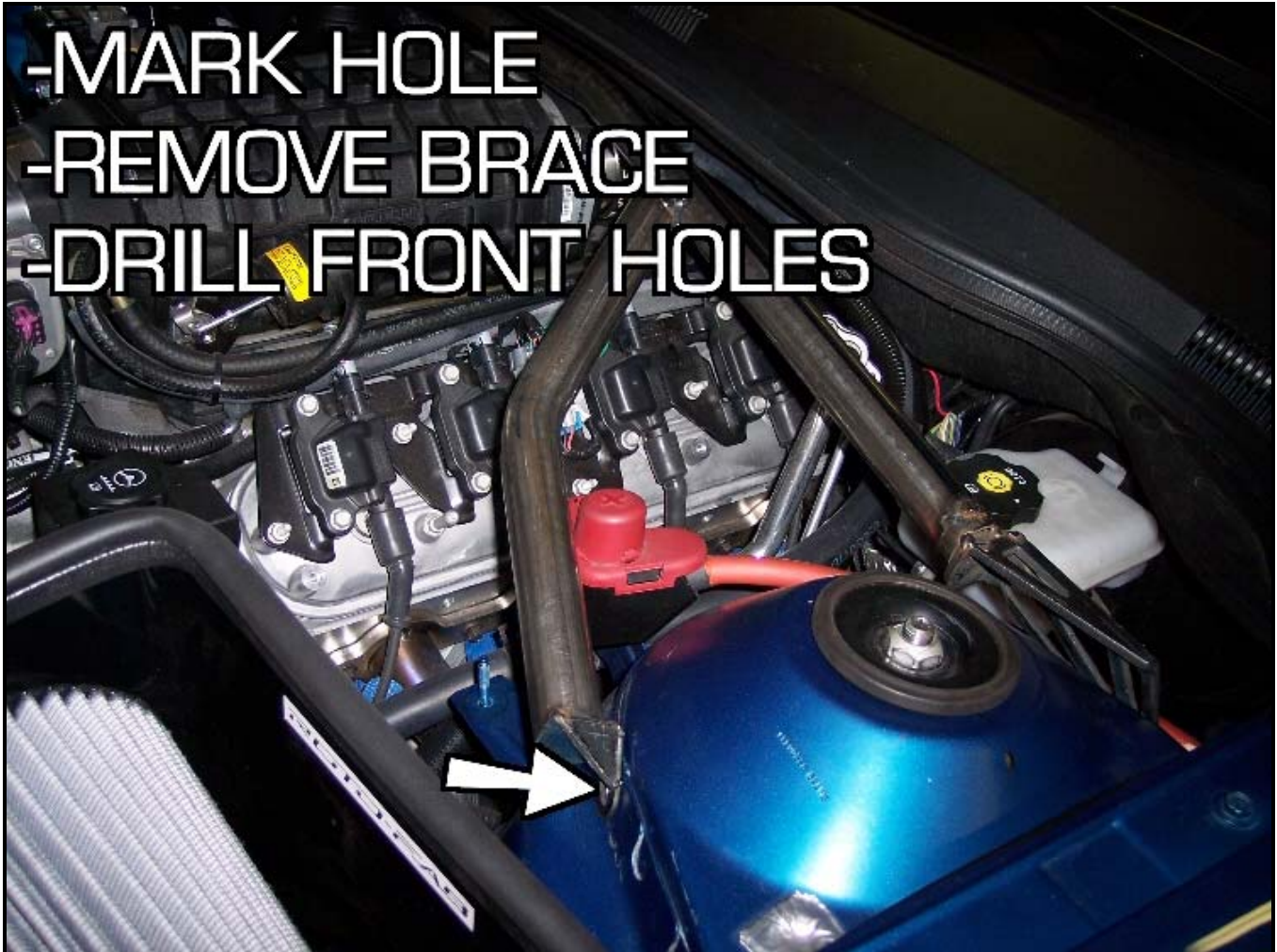




10. Once the rear holes are drilled out on the both sides, Position the strut brace in the engine bay. Install the longer rear bolts through the holes you just drilled and through the rear bracket of the brace. Spin the nuts on, but do not tighten. The front mounts will sit in front of the strut towers.



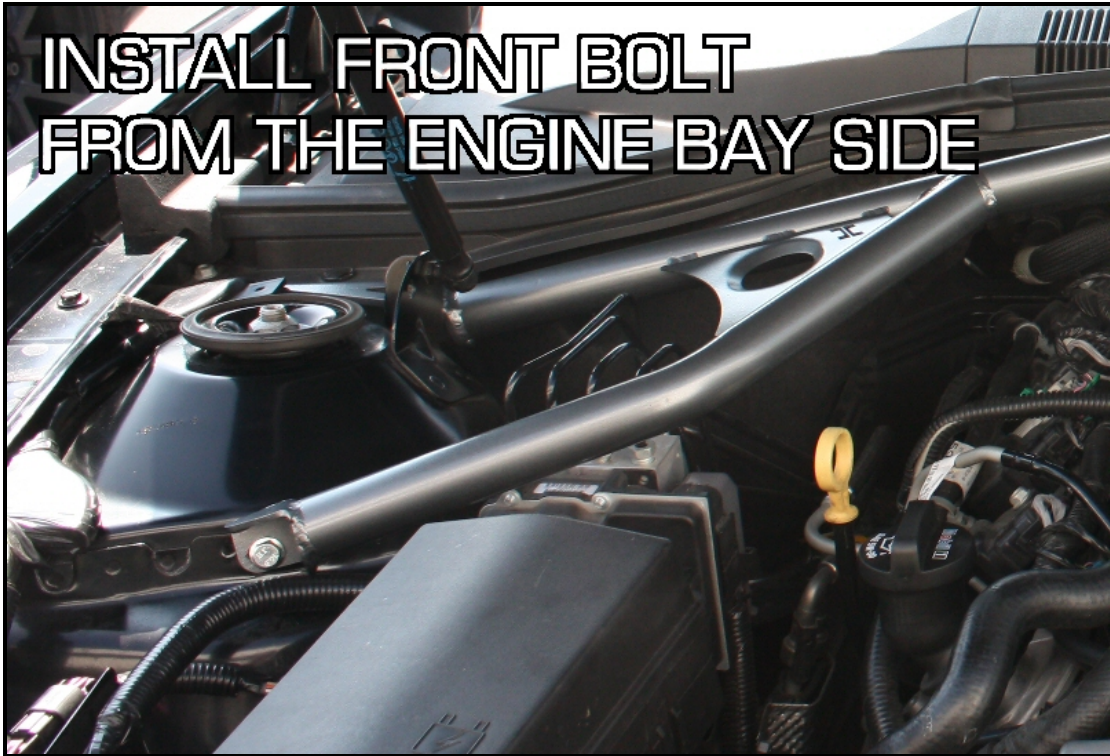
11. With the strut brace in place you can now mark the front holes with a marker. Mark the center of the front bracket slot on each side. Remove the strut brace from the vehicle.

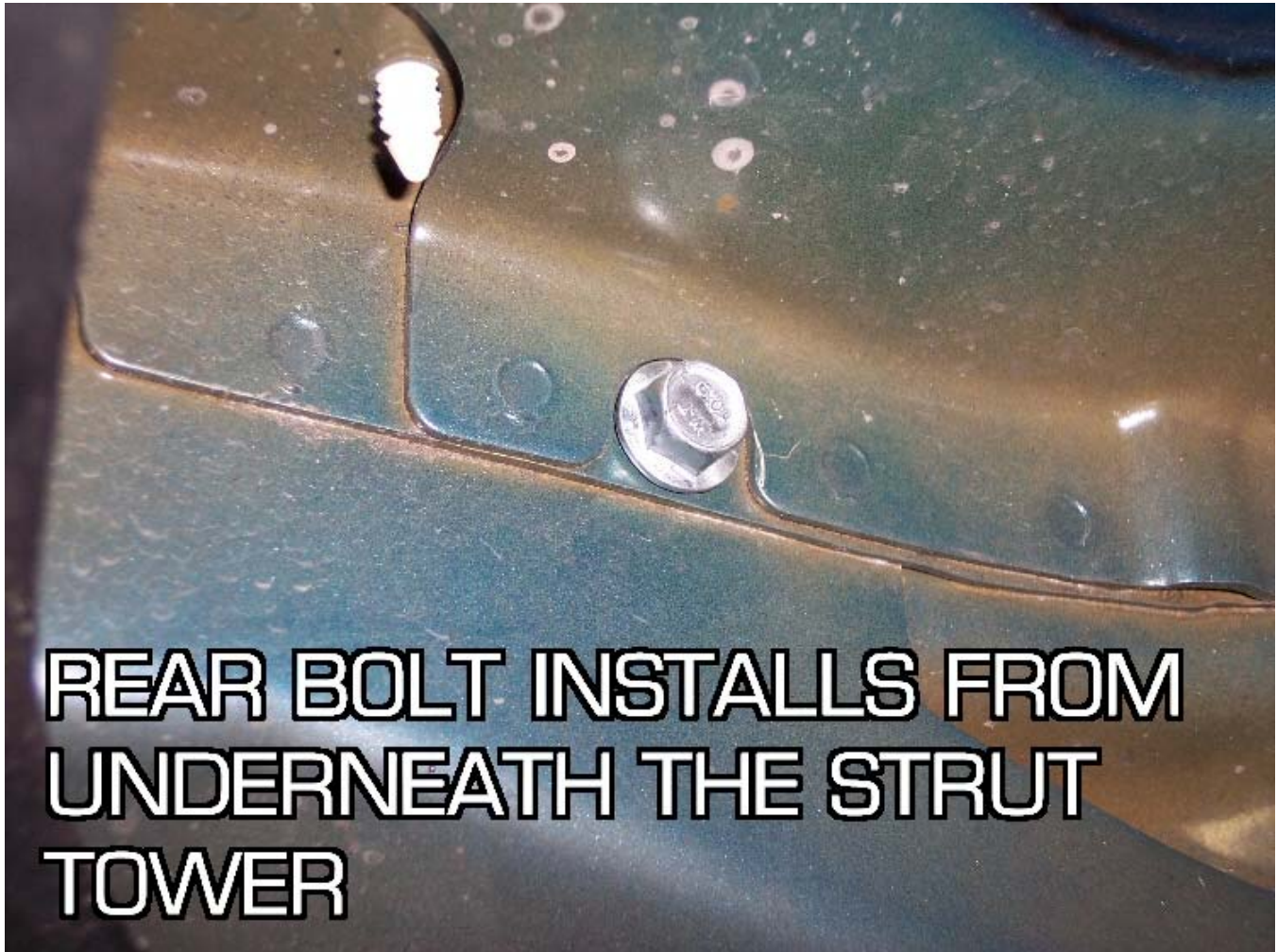


12. Drill the front holes in the same manner as the rear holes. Start with a 1/16" or 1/8" pilot hole and finish it off with a 3/8" hole. These holes can be drilled from the engine bay side.

13. Reinstall the strut brace on the vehicle and insert the longer bolts from the bottom of the strut tower through the rear holes. The shorter bolts are for the front and can be inserted from the front. Use the lock washer on the nut side of the fasteners.







14. Reinstall the front struts in reverse order and you are finished with your installation.