



FORD PERFORMANCE

M-16600-FP Mustang Deck Lid Spoiler (Coupe Only)

NO PART OF THIS DOCUMENT MAY BE REPRODUCED WITHOUT PRIOR AGREEMENT AND WRITTEN PERMISSION OF
FORD PERFORMANCE PARTS © Ford Motor Company 2020

PRIOR TO INSTALLATION READ THESE INSTRUCTION COMPETELY
For questions, Call the FORD PERFORMANCE Techline 1-800-367-3788

Please visit <https://www.performanceparts.ford.com> for warranty information



Ford Factory Shop Manual purchase options www.motorcraftservice.com



FORD PERFORMANCE

M-16600-FP Mustang Deck Lid Spoiler (Coupe Only)

NO PART OF THIS DOCUMENT MAY BE REPRODUCED WITHOUT PRIOR AGREEMENT AND WRITTEN PERMISSION OF FORD PERFORMANCE PARTS © Ford Motor Company 2020

Parts Included in this Kit

- 1- Rear Deck Lid Spoiler
- 1- Wickerbill
- 2- Drill Template
- 4- Pan Head Screws
- 4- Flange Nuts

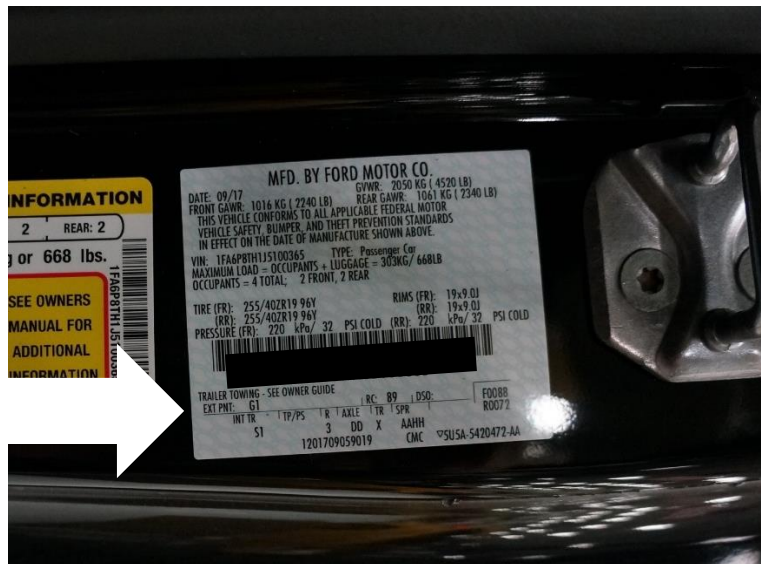
ADDITIONAL ITEMS NEEDED

- PM-13-A Motorcraft Anti Corrosion Coating
- TA-25B Thread Locking Compound
- Painters Tape

If color matching the Spoiler and Wickerbill is desired

BEFORE INSTALLATION:

Locate the Vehicle Tag in the Driver Side Door Jam. In the lower, left corner, you will find your Exterior Paint Color Code. Your Body Shop will need this code to ensure proper color match of your new Spoiler. Be sure to tape off the threaded Studs and Clips on the Spoiler before painting.



Ford Factory Shop Manual purchase options www.motorcraftservice.com



FORD PERFORMANCE

M-16600-FP Mustang Deck Lid Spoiler (Coupe Only)

NO PART OF THIS DOCUMENT MAY BE REPRODUCED WITHOUT PRIOR AGREEMENT AND WRITTEN PERMISSION OF FORD PERFORMANCE PARTS © Ford Motor Company 2020

Installation

1. Ensure the Deck Lid is clean of all debris before beginning installation process.
2. Use Painters Tape or equivalent to protect the paint as well as to give you something to make your drill location marks on. Cover the rear most edge and forward, about six (6) inches.



3. Remove the Inner Deck Lid Trim Panel by removing the seven (7) Push Clips. Retain these Clips for reassembly.



4. Locate the Template and cut out as defined. Align the Template on the Deck Lid as shown and secure it with Tape.

Ford Factory Shop Manual purchase options www.motorcraftservice.com



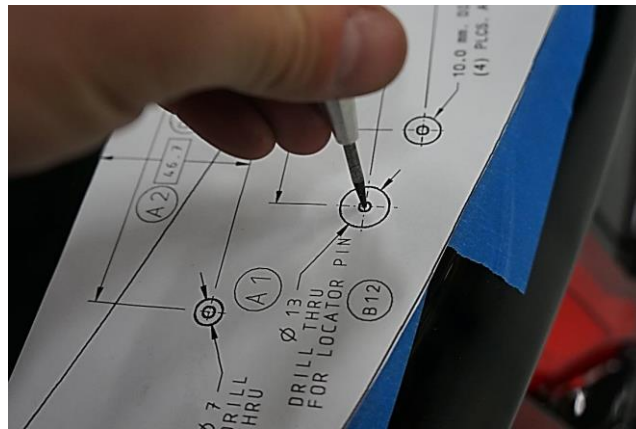
FORD PERFORMANCE

M-16600-FP Mustang Deck Lid Spoiler (Coupe Only)

NO PART OF THIS DOCUMENT MAY BE REPRODUCED WITHOUT PRIOR AGREEMENT AND WRITTEN PERMISSION OF FORD PERFORMANCE PARTS © Ford Motor Company 2020



- Using a Center Punch, transfer the center of the Holes to be drilled.



- Drill Pilot Holes at ALL locations with a 1/8-inch (3mm) bit.
- Refer to the Template, Label and Drill the final hole sizes. 7mm or 9/32, 10mm or 3/8 and 13mm or 1/2



Ford Factory Shop Manual purchase options www.motorcraftservice.com



FORD PERFORMANCE

M-16600-FP Mustang Deck Lid Spoiler (Coupe Only)

NO PART OF THIS DOCUMENT MAY BE REPRODUCED WITHOUT PRIOR AGREEMENT AND WRITTEN PERMISSION OF FORD PERFORMANCE PARTS © Ford Motor Company 2020

8. Test fit the Spoiler. Correct any issues with the through holes as needed. Remove the Painters Tape.
9. Deburr the holes and use PM-13-A Motorcraft Anti-Corrosion Coating to prevent corrosion on all the raw surfaces.
10. Clean surface after removing the Painter Tape.
11. Remove the Adhesive Tape Liner. While lining up the Studs and Locator Pins, adhere the Spoiler to the Deck Lid. Apply appx 15 lbs. of pressure for appx 30 seconds.
12. Open the Trunk and remove the two (2) Rubber Plugs on either side of the Deck Lid.



13. Install all the Nuts onto the Studs protruding through the Deck Lid.
Torque to 48 in/lb. (5.4Nm)
14. Vacuum inside the Deck Lid and Trunk area.
15. Install the Rubber Plugs and Inner Trim Panel onto the Deck Lid.
16. Keep the Vehicle as dry as possible for a minimum of 24hrs to allow the Adhesive Strip to properly adhere.

WARNING!!!!!!

THE WICKER IS A TRACK ONLY PART AND WILL INCREASE REAR DOWNFORCE. INSTALLING IT ON A VEHICLE WILL REQUIRE CHECKING THE AERODYNAMIC BALANCE.

Ford Factory Shop Manual purchase options www.motorcraftservice.com



FORD PERFORMANCE

M-16600-FP Mustang Deck Lid Spoiler (Coupe Only)

NO PART OF THIS DOCUMENT MAY BE REPRODUCED WITHOUT PRIOR AGREEMENT AND WRITTEN PERMISSION OF FORD PERFORMANCE PARTS © Ford Motor Company 2020

If you are installing the Wicker,

Use a T20 Bit to remove the Four (4) Screws on the backside of the Spoiler and set aside as they will not be re-used.



Use the included four (4) Longer Screws to install the Wicker. Use a very small amount of Blue Thread Locking Compound. A single drop is all that is needed.

Torque: 48in/lb. (5.4 Nm)



Ford Factory Shop Manual purchase options www.motorcraftservice.com