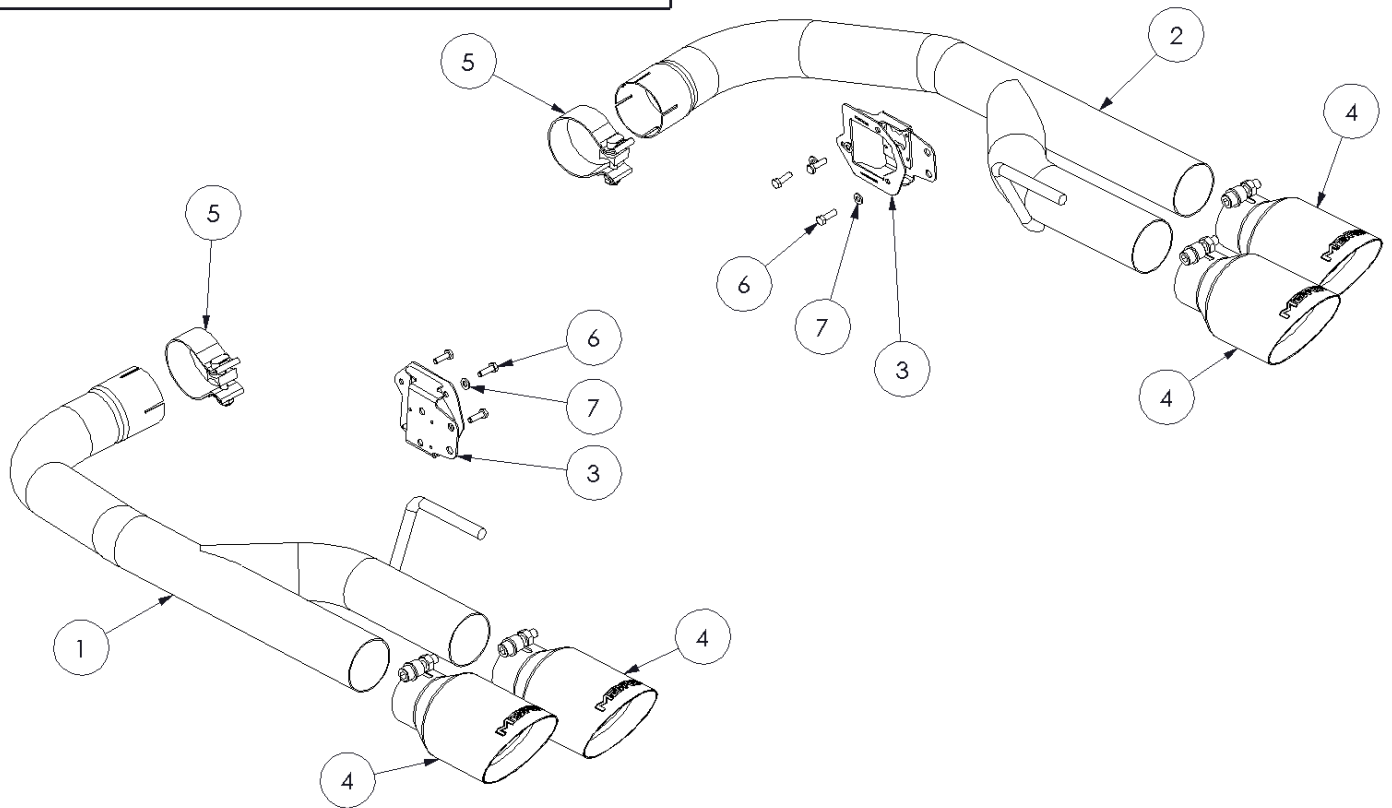


S7281

2024-UP FORD MUSTANG GT 5.0,
AXLE-BACK, 2.5" DUAL REAR, QUAD TIPS
*ACTIVE EXHAUST FUNCTION NOT RETAINED
ON FACTORY EQUIPPED VEHICLES

MBRP®



ITEM	DESCRIPTION	QTY
1	DRIVER-SIDE TAILPIPE	1
2	PASSEIGNER-SIDE TAILPIPE	1
3	ACTUATOR MOUNTING BRACKET	2
4	TIP	4
5	2.5" CLAMP	2
6	M6x20 HEX BOLT	6
7	M6 FLAT WASHER	6

Refer to this LOT NUMBER when contacting customer service: _____

PLEASE READ BEFORE STARTING INSTALLATION

While MBRP has made every effort to ensure that all components of this system are of superior quality and properly packaged, it is the installer's responsibility to ensure the following before removal of the factory exhaust:

- that ALL components shown above are present.
- that ALL mating components fit together.
- that there are no damaged components.
- that the system you have purchased is appropriate for your vehicle year, model and configuration.
- that the system will not interfere with any modifications previously installed or planned.
- that you have read and understand these instructions.

If you have any questions or are uncertain about any aspect of the installation of this system to your vehicle please contact your dealer before commencing installation.

Removal of Stock System

Note: Installation requires cutting the OEM exhaust



Figure 1



Figure 2

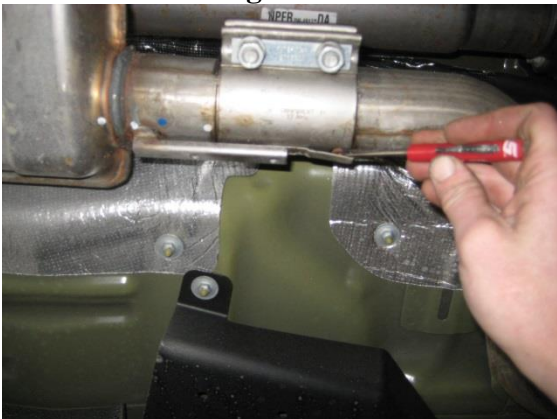


Figure 3



Figure 4

1. Apply a penetrating lubricant liberally to all exhaust fasteners, hangers and rubber insulators.

2. Convertibles require removal of the under-car brace.

3. Remove the rear undertray to allow removal of the OEM cat-back.

Refer to Figure 1.

4. Disconnect the wiring harness from both exhaust valve actuators.

5. Remove the bolts from the mid hanger brackets and remove them from the vehicle. Retain these parts as they will be reused.

Refer to Figure 2.

6. Loosen both clamps ahead of the resonator, lift the lock tabs and slide the clamps rearward to disconnect the OEM cat-back exhaust. Use caution, the OEM cat-back is one piece and heavy.

Refer to Figure 3.

7. Remove the OEM cat-back by lowering the inlet end and sliding the assembly forward to remove it from the rear hangers.

8. Remove both exhaust valve actuators and drive springs from the OEM cat-back. Retain the 6 nuts as they will be reused.

Installation of MBRP Inc. Performance Exhaust



Figure 5



Figure 6



Figure 7



Figure 8



Figure 9

1. Cut the mufflers and inlet elbows off at the end of the short straight section of tubing on the OEM cat-back. There should be approx. 2" of straight tubing remaining on the OEM cat-back. It is critical that this straight length of tubing remain on the OEM cat-back to allow installation of the MBRP Axle Back Kit.

Refer to Figures 4 and 5.

2. Install the modified OEM cat-back exhaust in the reverse order of the description above. Leave the clamps and mid hanger brackets loose at this time.

3. Install a 2.5" Clamp onto the inlet of the **Passenger Side Tailpipe**. Slide the hanger into the rear hanger bracket, followed by sliding the expanded end of the **Passenger Side Tailpipe** onto the cut end of the OEM cat-back pipe.

Refer to Figures 6 and 7.

4. Install a valve actuator and drive spring onto an **Actuator Bracket** using the supplied M6 hardware and reusing the previously removed M6 nuts. Note orientation of the spring in the **Actuator Bracket**.

Refer to Figures 8 and 9.

5. Remove upper/inner passenger-side rear hanger bracket bolt. Install the **Actuator Bracket** on top of rear hanger bracket and secure using the bolt. Reconnect the Valve Actuator wiring harness. Be sure to secure all wiring away from hot exhaust components.

Refer to Figure 10.

6. Repeat steps 3-5 for the driver side components.

7. Install the **Tips** and tighten just enough to allow for adjustment.

Refer to Figure 11.

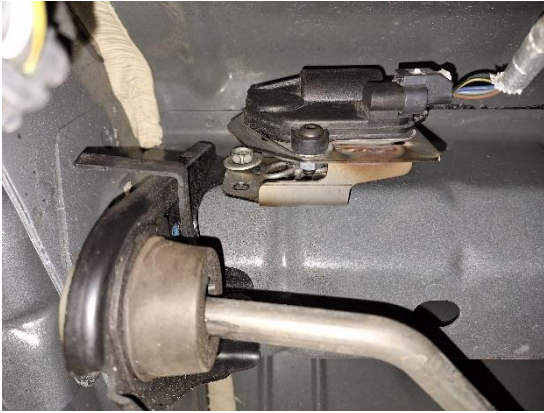


Figure 10

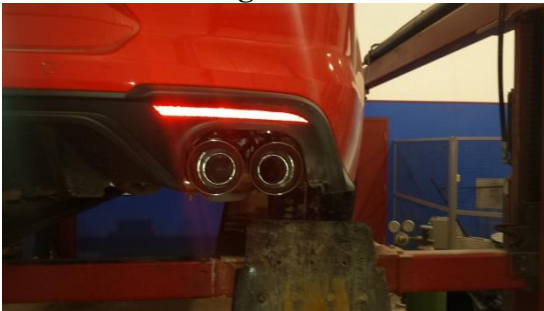


Figure 11

8. Install the under-car brace if equipped, using the previously removed hardware.

9. Install the rear undertray using the previously removed hardware.

10. Align the exhaust as required to center the **Tips** in the rear fascia, and provide clearance around all other undercar components, then tighten all clamps.

Note: The mid hanger brackets can be used to help center the **Tips** in the Facia. Once all clamps are tight, adjust the mid hanger brackets to fine tune the placement of the **Tips** then tighten the bolts.

11. Tighten all hardware and clamps, starting at the front and working rearward to secure the system. Check along the full length of the exhaust system to ensure there is adequate clearance for fuel lines, vent lines, brake lines, frame, bodywork, suspension, and any wiring, etc. If there is any interference detected, relocate, or adjust to provide adequate clearance. Ensure all clamp connections are secure and components are unable to rotate or slide. Band clamps require approximately 45 lb-ft (60 N-m) of torque. Verify clearances, system security and band clamp torque after 30-60 miles (50-100 km) of driving.

Congratulations! You are ready to begin experiencing the improved performance and driving pleasure of your **MBRP performance exhaust system. We know you will enjoy your purchase.**