

2019 CHEVROLET SILVERADO

CORSA[®]
PERFORMANCE



IMPORTANT! WARRANTY AND INSTALLATION INSTRUCTIONS

Please Forward All Information to Consumer

Be sure to review the enclosed instructions prior to beginning the installation process. If you have any questions about the enclosed parts or instructions, or if you encounter a problem during installation:

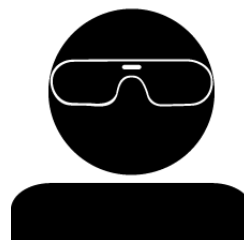
CALL TECHNICAL SUPPORT: 440.891.0999 or 800.486.0999

**TO ACTIVATE YOUR WARRANTY GO TO:
CORSAPERFORMANCE.COM/WARRANTY**

COLOR INSTRUCTIONS ARE AVAILABLE BY PART NUMBER ON: CORSAPERFORMANCE.COM



NEVER work on a hot exhaust system.
Allow time for the vehicle to cool.



**Always wear eye protection
when working under a vehicle.**

INSTALL DIFFICULTY

RECOMMENDED TOOLS & SUPPLIES

- 3/8" Drive Ratchet
- 3/8" Drive Torque Wrench
- 3/8" Drive 13mm Deep Socket
- 3/8" Drive 15mm Deep Socket
- Black Marking Pen
- Grommet Pullers
- Soap and Water Solution
- Chain Style Pipe Cutter
- Penetrating Lubricant Spray
- Tape measure

Please take time to read and understand these installation instructions.

CORSA recommends that the installation of this system be performed by a qualified service center or professional installer who has the necessary equipment, tools, and experienced personnel. However, if you decide to perform this installation yourself, the use of an additional person may be required.

WARNING: Never work on a hot exhaust system. Allow time for the vehicle to cool. Always wear eye protection when working under a vehicle.

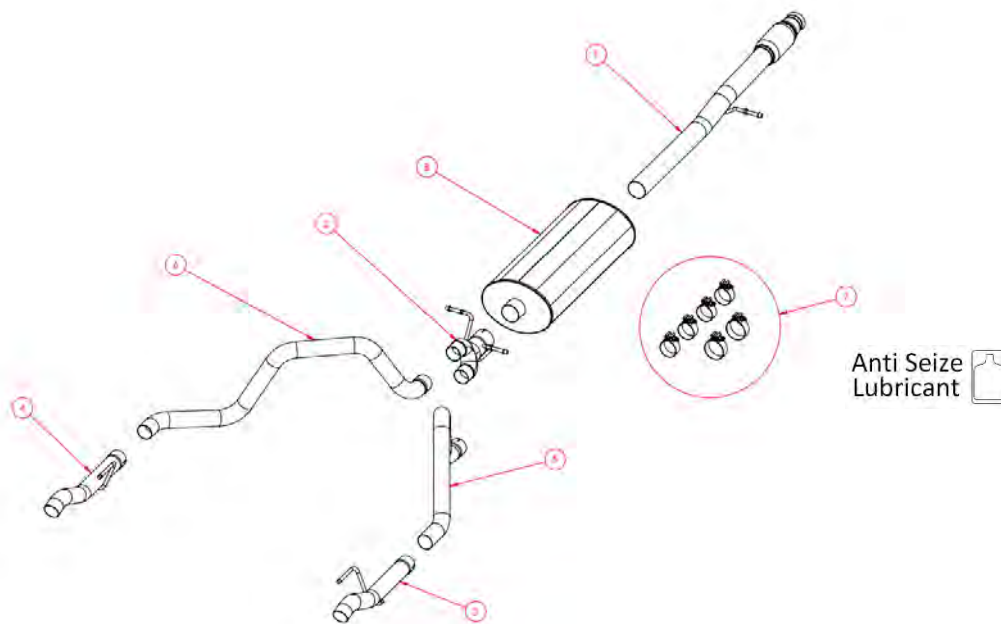
CORSA Performance makes no representation or warranty, expressed or implied that its downpipe or header products and or components there-in comply with federal, state or local emission levels, noise levels, or safety standards or that any of their parts conform with the racing vehicles exemption, unless otherwise noted. The purchaser assumes all responsibility for such use and compliance.

This warranty does not extend to damaged or defect in the finish of a product or to any product, that in the opinion of CORSA Performance, has been misused, damaged by accident or negligence, altered or modified in any way, faulty installation or installed contrary to CORSA installation instructions, or repaired by an unauthorized service facility.

Full warranty available on www.corsaperformance.com

Please confirm that all parts are present according to the bill of materials before beginning the installation.

If something is missing call Tech Support at 440.891.0999 or Toll Free: 1.800.486.0999



BILL OF MATERIALS

1. Headpipe Assembly (16SE4542)	2. Y – Pipe Assembly (16SE4551)
3. Rear Tailpipe Assembly, Passenger Side (16SE4553)	4. Rear Tailpipe Assembly, Driver's Side (16SE4554)
5. Front Tailpipe, Passenger Side (16SE4557)	6. Front Tailpipe, Driver's Side (16SE4558)
7. Hardware Kit (16SE7118)	8. Muffler Assembly (16TA2019)

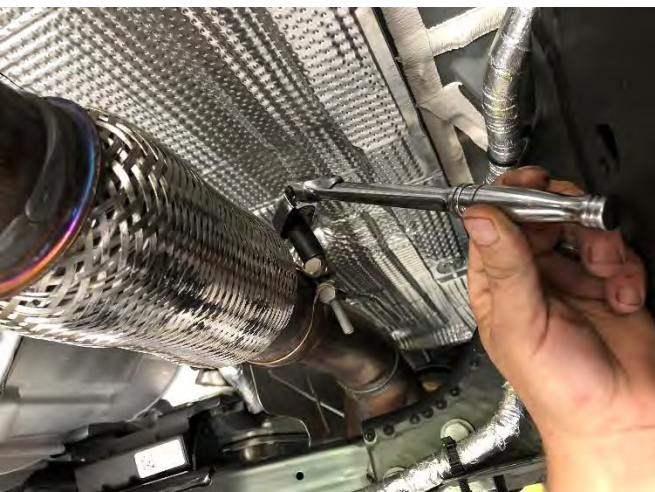
CAUTION: Never work on a hot exhaust system. Allow the vehicle to cool for at least an hour and a half. Always wear eye protection when working under a vehicle. It is recommended to use cotton gloves in order to protect stainless steel surfaces from permanent grease and oil stains.

REMOVAL INSTRUCTIONS

FACTORY EXHAUST



1. Scribe a line 6" from the hanger next to the muffler closest to the rear of the vehicle.
2. Place a chain style cutter around the exhaust pipe at the scribe line location and cut the exhaust pipe.



3. Use a 13mm socket to loosen the spherical clamp on the factory headpipe. Keep the factory spherical clamp for use with your Corsa Exhaust System.
4. Remove the grommets from the Headpipe hangers at in the front of the muffler behind the flex pipe, using grommet pullers or similar device.
Note: Using a soapy solution on the grommet hole will make the job easier.

Continued on Next Page . . .

REMOVAL INSTRUCTIONS

FACTORY EXHAUST



5. Remove the left grommet from the left tailpipe hanger at the muffler exit, using grommet pullers or similar device.

Note: Using a soapy solution on the grommet hole will make the job easier.



6. Remove the right grommet from the right tailpipe hanger at the muffler exit, using grommet pullers or similar device.

Note: Using a soapy solution on the grommet hole will make the job easier.



7. Remove the front section of the factory exhaust system and lay it aside.



8. Loosen the factory flange on the driver's side tail pipe using a 13mm socket.

Note: Support the remaining exhaust components using a jack stand or similar device.

Continued on Next Page . . .

REMOVAL INSTRUCTIONS

FACTORY EXHAUST



9. Disconnect the factory grommet from the frame using a 13mm socket on the driver's side tailpipe.



10. Carefully remove the driver's side tail pipe section.



11. Disconnect the factory grommet from the frame using a 13mm socket on the passenger side tailpipe.



12. Carefully remove the passenger side tail pipe section.

Continued on Next Page ...

REMOVAL INSTRUCTIONS

FACTORY EXHAUST



13. Remove the factory grommets from the driver's side tail pipe hanger and reattach it to the frame using a 13mm socket.



14. Remove the factory grommet from the passenger side tail pipe hanger and reattach it to the frame using a 13mm socket.

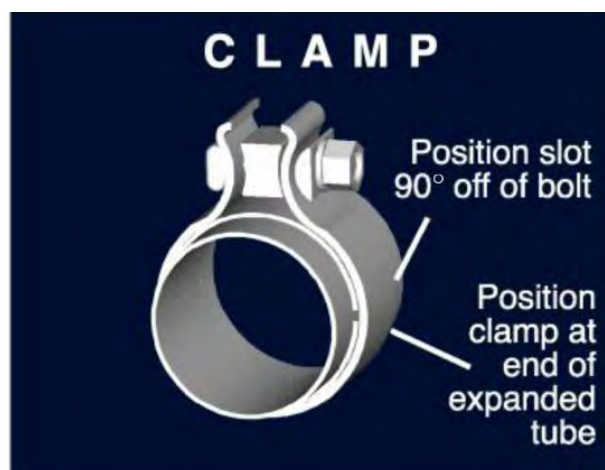
Step 14 concludes the removal of the factory exhaust.

WARNING! DO NOT SKIP THIS STEP!

Apply the anti-seize lubricant (*supplied*) to the threads **ONLY** of all the clamps and flange bolts. Failure to follow this procedure can cause nuts to seize on clamps and potentially destroy threads.

After applying anti-seize lubricant, be sure to **thoroughly** clean your hands, as lubricant will tarnish stainless steel.

All clamps should be tightened using a properly calibrated Torque Wrench. Using an air impact gun will damage the clamp and reduce its ability to effectively seal the joint. It may also cause the joint to separate, thereby causing damage to your exhaust system and to your vehicle.



NOTE: Align all clamps so that the center of the clamp bolt is 90 degrees from the notch in the pipe.

INSTALLATION INSTRUCTIONS

CORSA EXHAUST



1. Reuse the stock spherical clamp and insert it on the head pipe on the side closest to the flex pipe as shown.



2. Put the headpipe hanger into the headpipe hanger grommet. Verify that there is at least a finger gap between the hanger and the frame of the truck when headpipe is secured in place.

Note: Using a soapy solution on the grommet hole will make the job easier.

Continued on Next Page ...

INSTALLATION INSTRUCTIONS

CORSA EXHAUST



3. Insert the spherical clamp into the factory pipe as shown. Make sure that the pipe is fully seated in the connection. Snug the spherical clamp using a 13mm socket.



4. Put the 3" TORCA clamp on the expanded and notched end of the muffler.



5. Slide the expanded end of the muffler into the headpipe.



6. Use a stand to support the other end of the muffler as shown.

Continued on Next Page . . .

INSTALLATION INSTRUCTIONS

CORSA EXHAUST



7. Snug the 3" TORCA clamp using a 15mm socket.



8. Insert a 3" TORCA clamp into the expanded and notched end of the Y – Pipe Assembly as shown.



9. Slide the Y- Pipe Assembly into the side of the muffler supported by the stand as shown.



10. Insert the hangers on the Y-Pipe Assembly into the factory hanger grommets as shown.

Note: Using a soapy solution on the grommet hole will make the job easier.

Continued on Next Page ...

INSTALLATION INSTRUCTIONS

CORSA EXHAUST



11. Snug the TORCA 3" clamp using a 15mm socket on the Y-Pipe Assembly as shown.



12. Insert a TORCA 2.5" Clamp into the expanded and notched end of the Drivers side Front Tail Pipe.



13. Slide the driver's side front tail pipe into the top section of the Y-Pipe as shown.



14. Insert a TORCA 2.5" Clamp into the expanded and notched end of the Passenger side Front Tail Pipe.

Continued on Next Page . . .

INSTALLATION INSTRUCTIONS

CORSA EXHAUST



15. Slide the passenger side front tail pipe into the bottom section of the Y-Pipe as shown.



16. Snug the driver's and the passenger side front tailpipe TORCA clamps using a 15mm socket as shown. Make sure to leave the clamps loose enough to adjust position and rotation of the pipes.



17. Insert a TORCA 2.5" clamp into the expanded and notched end of the passenger side rear tailpipe as shown.



18. Insert the hanger on the passenger side rear tailpipe into the hanger grommet on the vehicle.

Note: Using a soapy solution on the grommet hole will make the job easier.

Continued on Next Page . . .

INSTALLATION INSTRUCTIONS

CORSA EXHAUST



19. Slide the expanded and notched end of the passenger side rear tailpipe into the passenger side front tailpipe. Snug the TORCA 2.5" clamp using a 15mm socket.



20. Repeat the process for the driver's side rear tailpipe.



21. Visually inspect the exhaust system position, alignment, clamp orientation & position and exhaust system clearances. Make any adjustment necessary at the slip joints.

Starting from the front of the Corsa exhaust system, tighten the spherical clamp to **21 ft-lbs** and TORCA clamps to **45 ft-lbs** using a torque wrench.

NOTE: It is strongly suggested that all clamps be checked and tightened after road testing the vehicle once the system has cooled.

NOTE: During cold weather start-ups, you may experience an exhaust sound that is deeper and louder in tone than usual. This is temporary and will diminish to normal levels once your engine has reached its normal operating temperature.

NOTE: Immediately following the installation of your exhaust system, you may experience a trace of smoke after initial start-up. DO NOT be alarmed. The smoke is caused by the burning of a small amount of forming oil residue used in the manufacturing process.